

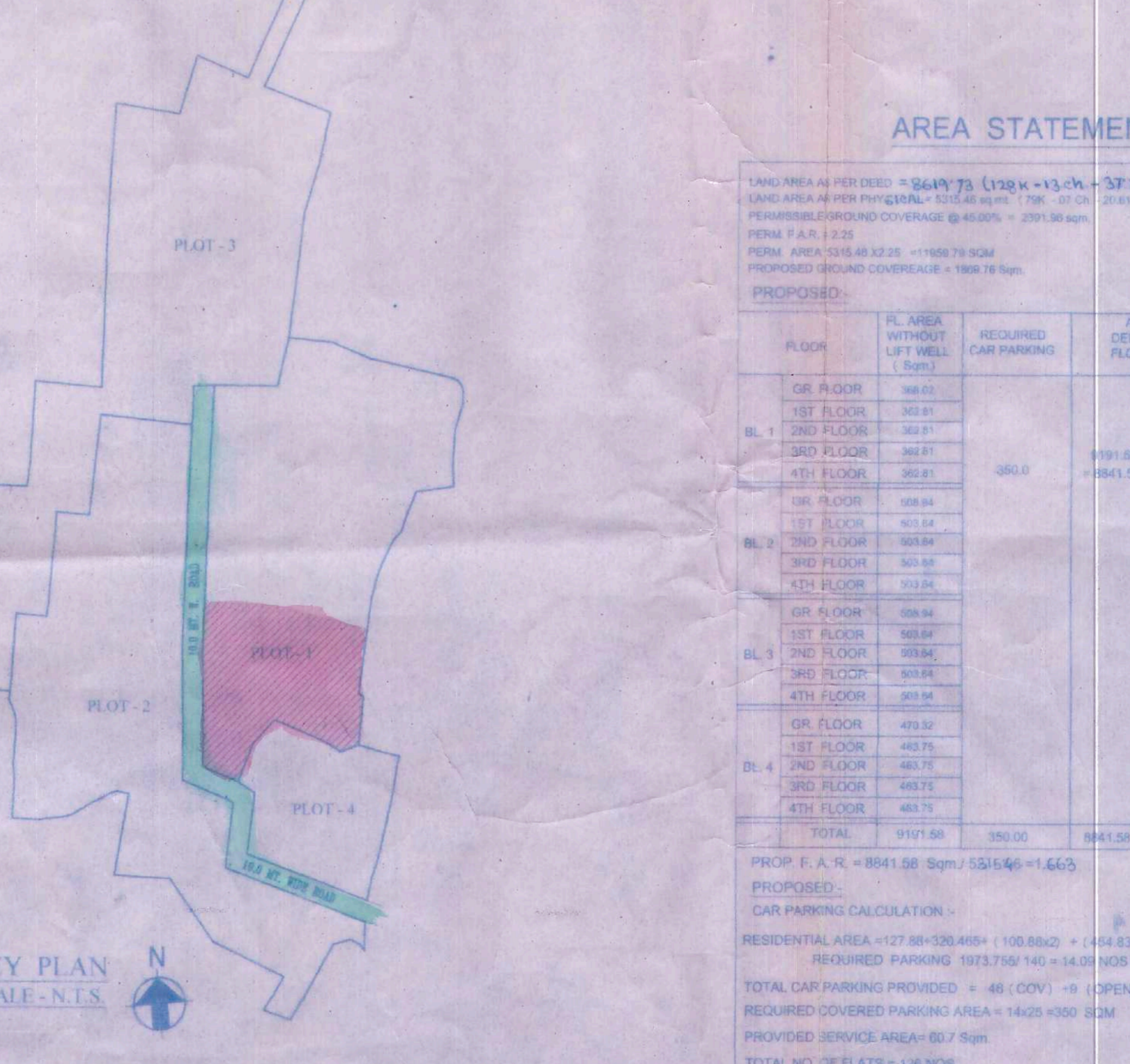
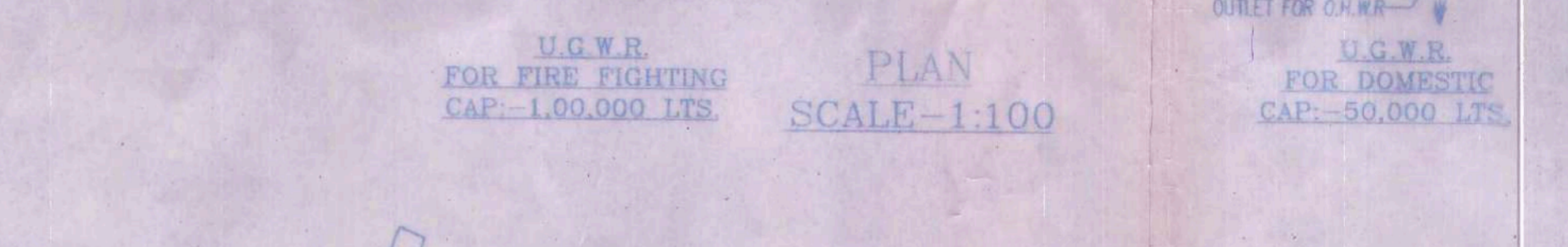
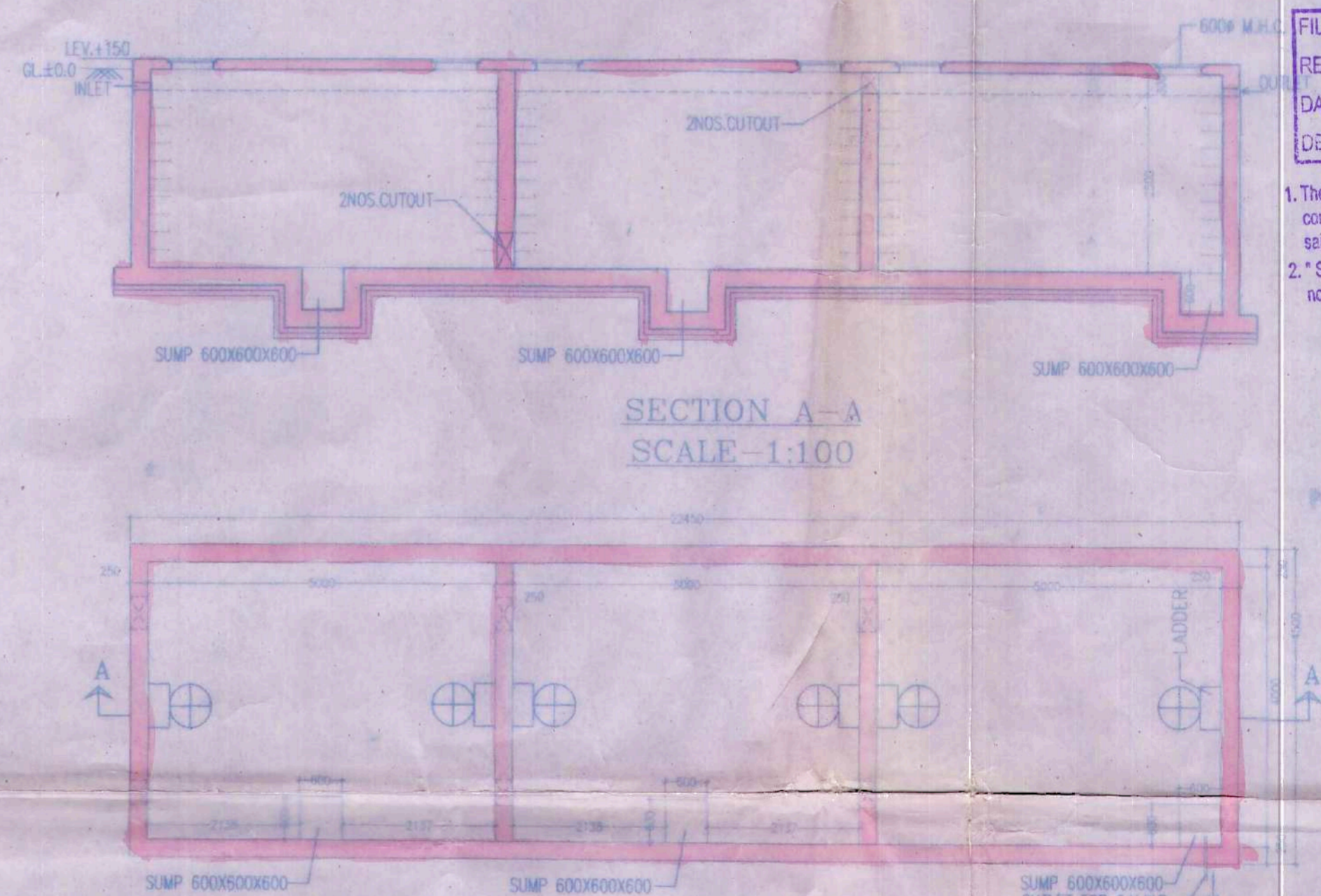
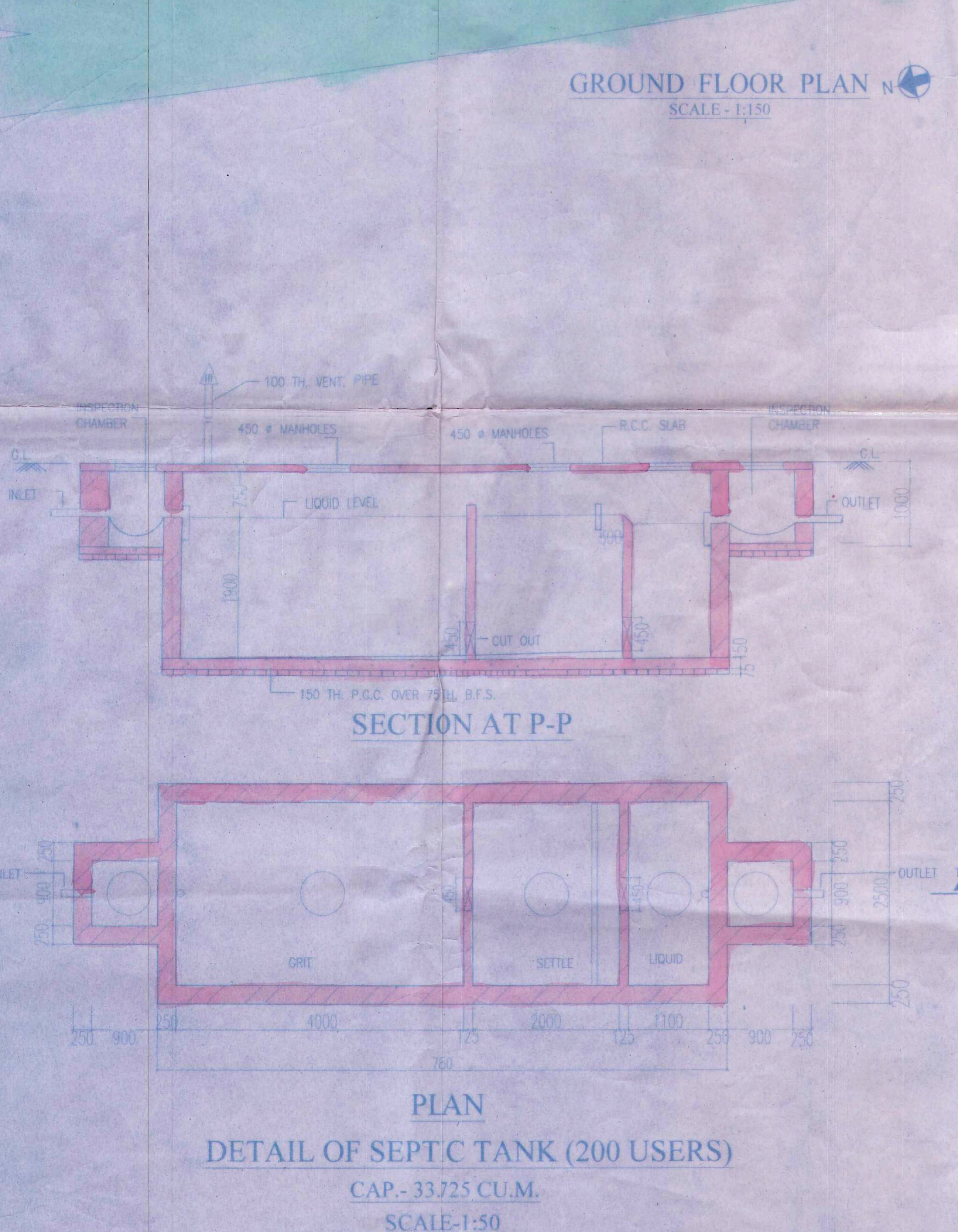
SCHEDULE OF DOORS & WINDOWS

NO.	SL. NO.	TYPE	NO.	UNIT	QTY
01	100	1000x1500	40	NO.	40
02	100	1000x1500	40	NO.	40
03	100	1000x1500	40	NO.	40
04	100	1000x1500	40	NO.	40
05	100	1000x1500	40	NO.	40
06	100	1000x1500	40	NO.	40
07	100	1000x1500	40	NO.	40
08	100	1000x1500	40	NO.	40
09	100	1000x1500	40	NO.	40
10	100	1000x1500	40	NO.	40
11	100	1000x1500	40	NO.	40
12	100	1000x1500	40	NO.	40
13	100	1000x1500	40	NO.	40
14	100	1000x1500	40	NO.	40
15	100	1000x1500	40	NO.	40
16	100	1000x1500	40	NO.	40
17	100	1000x1500	40	NO.	40
18	100	1000x1500	40	NO.	40
19	100	1000x1500	40	NO.	40
20	100	1000x1500	40	NO.	40

GENERAL NOTES

- The structure shall be built in brick & concrete.
- All masonry work shall be done in accordance with IS: 462.
- Structure shall be designed for 20% & 30% increase in load.
- Structure shall be designed for 20% & 30% increase in load.
- Structure shall be designed for 20% & 30% increase in load.
- Structure shall be designed for 20% & 30% increase in load.
- Structure shall be designed for 20% & 30% increase in load.
- Structure shall be designed for 20% & 30% increase in load.
- Structure shall be designed for 20% & 30% increase in load.
- Structure shall be designed for 20% & 30% increase in load.

APPROVED BY:
Mallikarjun Private Limited
Director



CERTIFICATE OF E.B.A.

SUBIRCHANDRA SANYAL
B.C.E., A.M.I.E., STRUCT. E. (I)
B.S. NO. 140, CLASS-I
E.S. NO. 007, CLASS-I
RATIPUR-GONARPUR MUNICIPALITY

APPROVAL OF S.A.E.

RAJKUMAR AGARWAL
Architect
Member of Council of Architecture CA/24/17540

AREA STATEMENT

FLOOR	AREA WITHIN LIFT WELL	REQUIRED CAR PARKING	AFTER REDUCTION FLOOR AREA (sqm)
GR. FLOOR	480.00	12	480.00
1ST FLOOR	480.00	12	480.00
2ND FLOOR	480.00	12	480.00
3RD FLOOR	480.00	12	480.00
4TH FLOOR	480.00	12	480.00
5TH FLOOR	480.00	12	480.00
6TH FLOOR	480.00	12	480.00
7TH FLOOR	480.00	12	480.00
8TH FLOOR	480.00	12	480.00
9TH FLOOR	480.00	12	480.00
10TH FLOOR	480.00	12	480.00
TOTAL	4800.00	120	4800.00

APPROVAL NO - 114/Mar/16